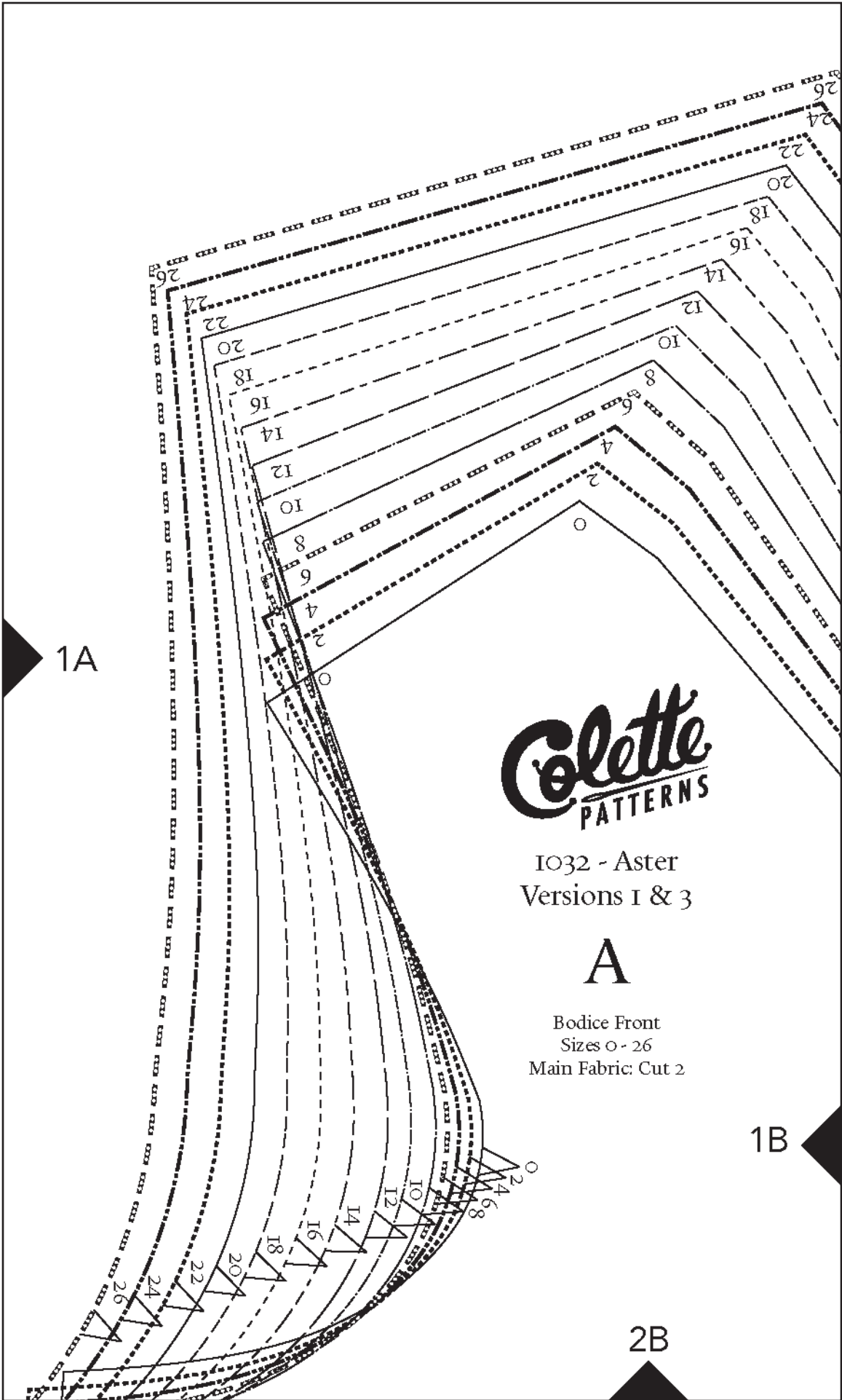


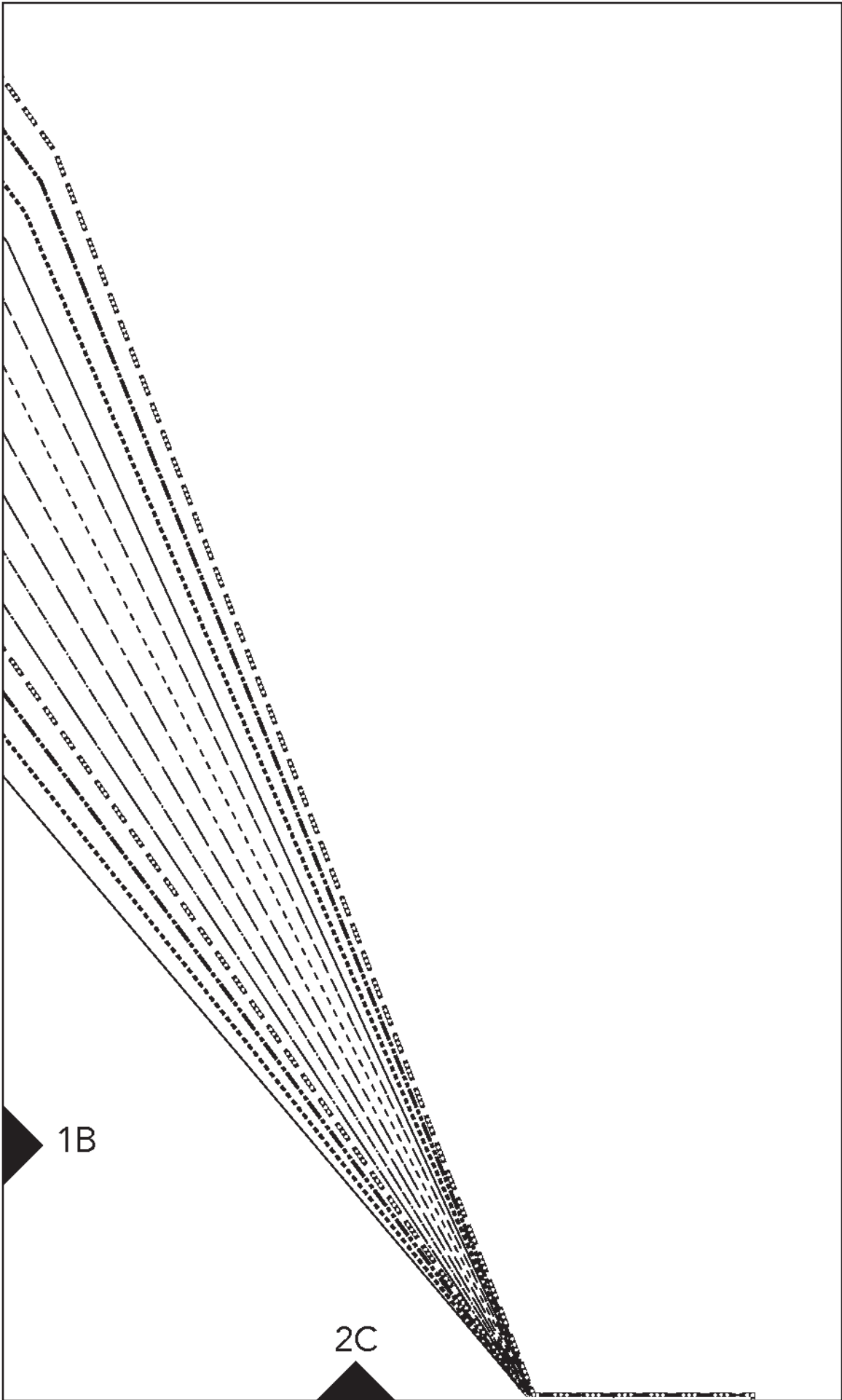
Test Square
4 inches by 4 inches

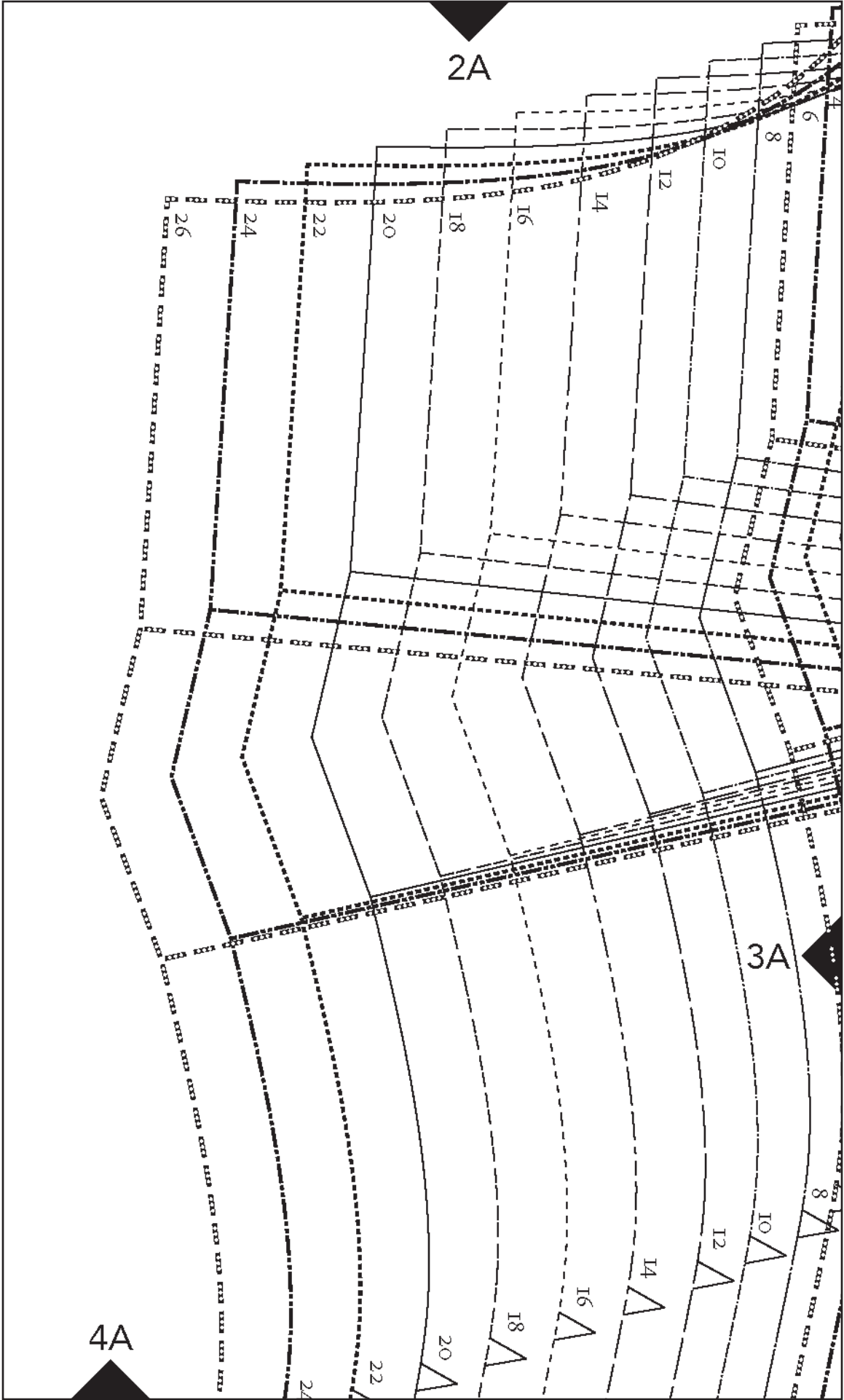
1A

2A



1032 - ASTER - V.3



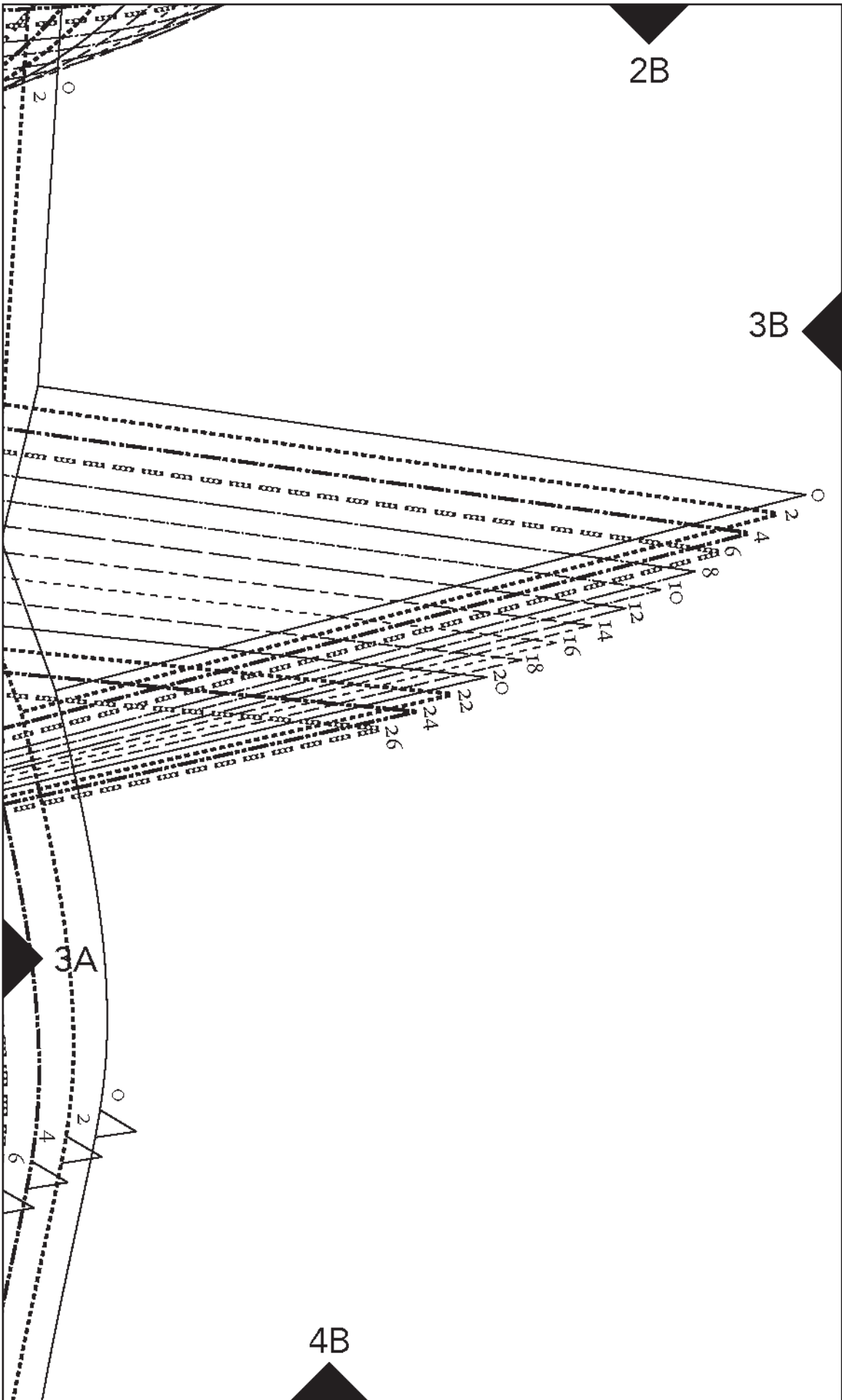


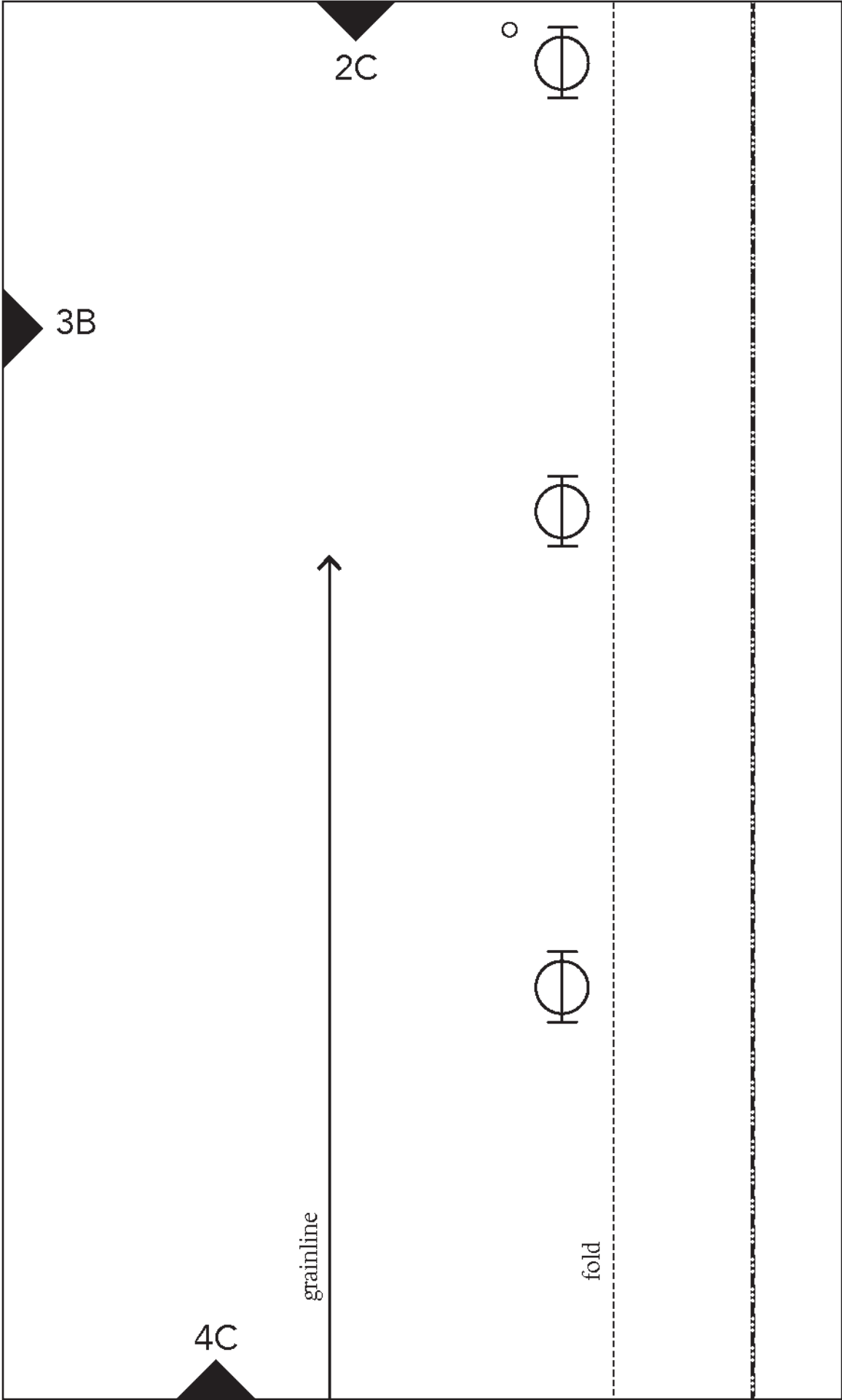
2A

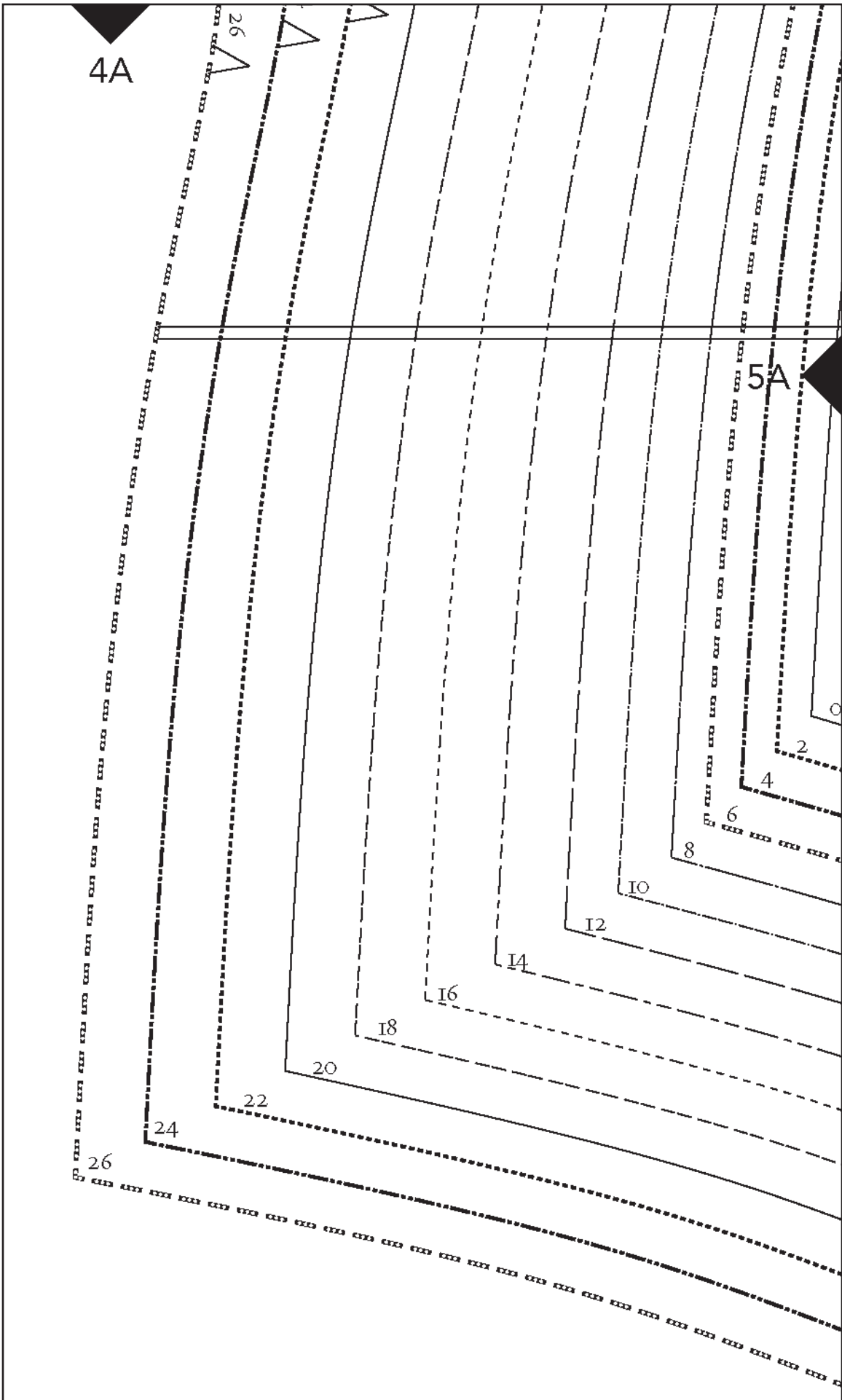
3A

4A

8
10
12
14
16
18
20
22
24
26







4B

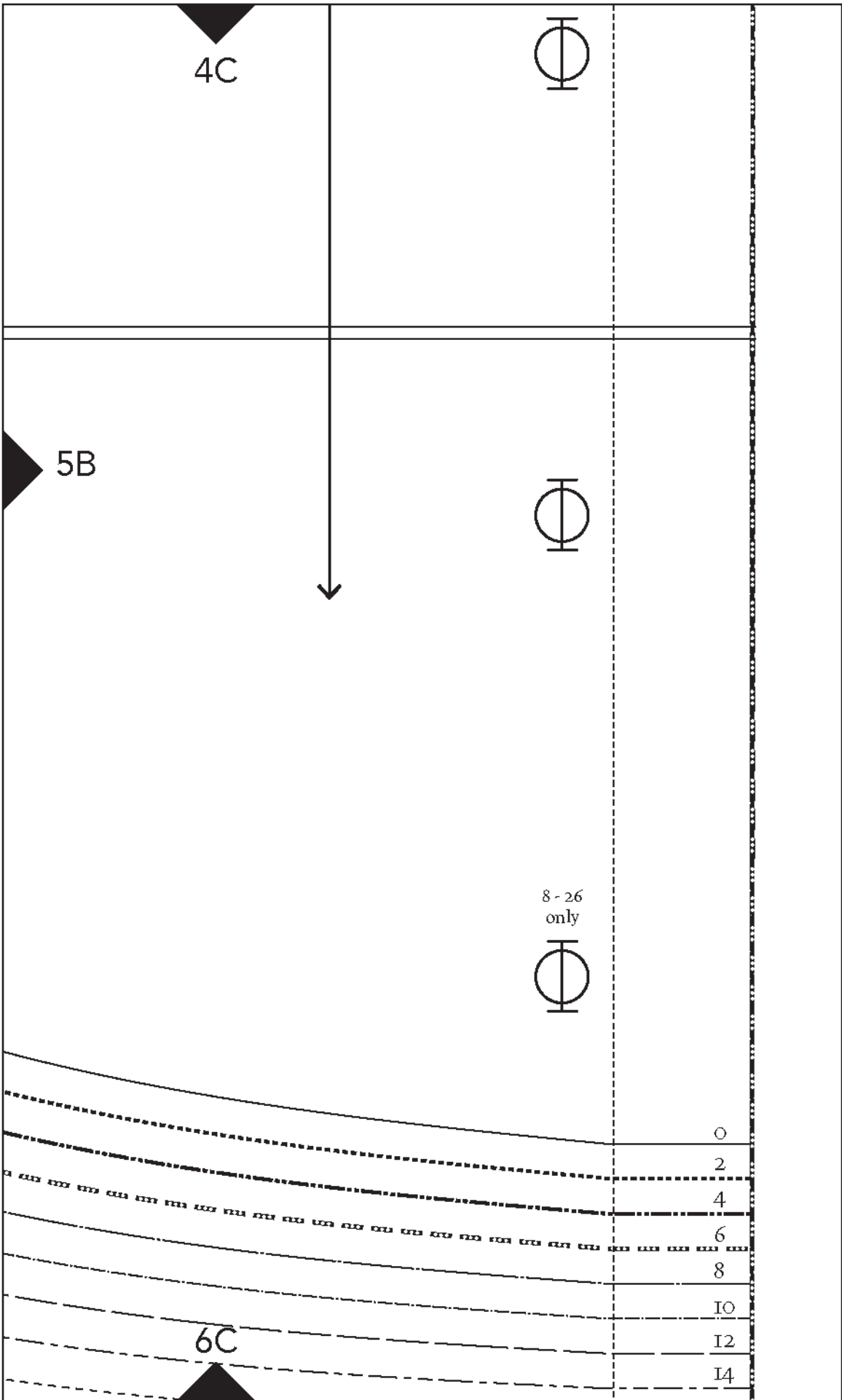
lengthen or shorten here

5A

5B

6B

The image shows a handwriting practice sheet divided into four sections. Section 4B is at the top and is blank. Section 5A is below 4B and is blank. Section 5B is to the right of 5A and is blank. Section 6B is at the bottom and contains multiple rows of handwriting practice lines. The lines in section 6B are arranged in a grid-like pattern, with each row consisting of a solid top line, a dashed middle line, and a dotted bottom line. The lines are slightly curved, following the shape of the page. The text 'lengthen or shorten here' is written in the center of the page, between sections 4B and 5A. The page number '1032 - ASTER - V.3' is written vertically on the left side. The labels '4B', '5A', '5B', and '6B' are placed in the corners of their respective sections.



1032 - ASTER - V.3



1032 - ASTER - V.3

6C

16
18
20
22
24
26

7B

