

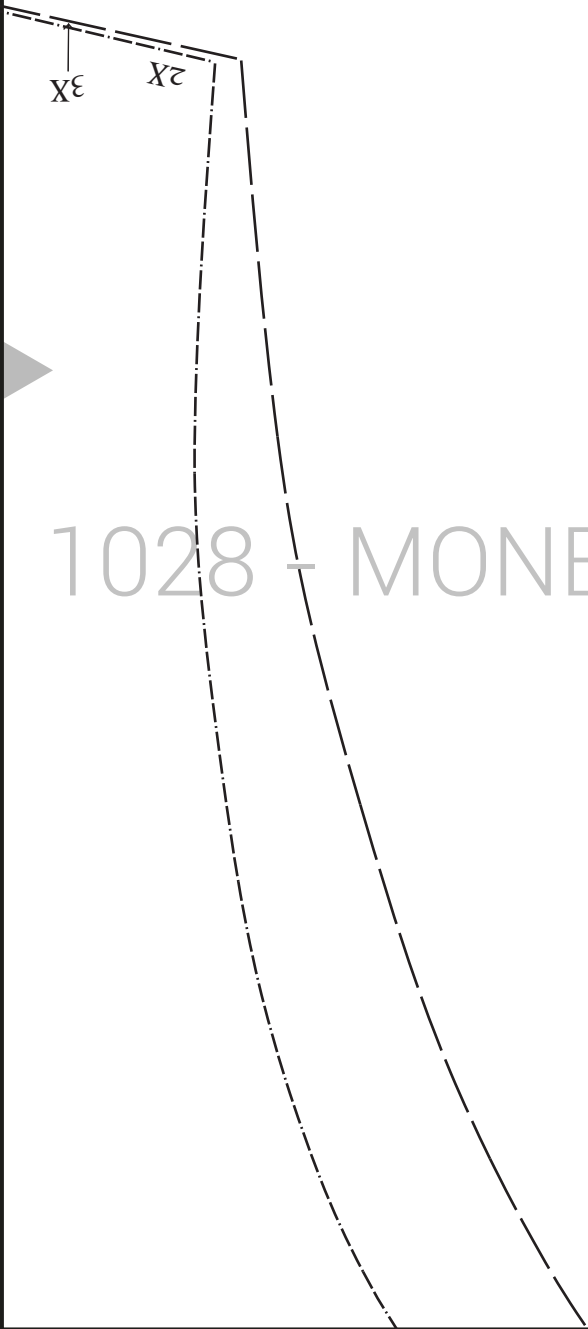
Test Square

4 inches by 4 inches

1

1028 - MONETA - New Bodice



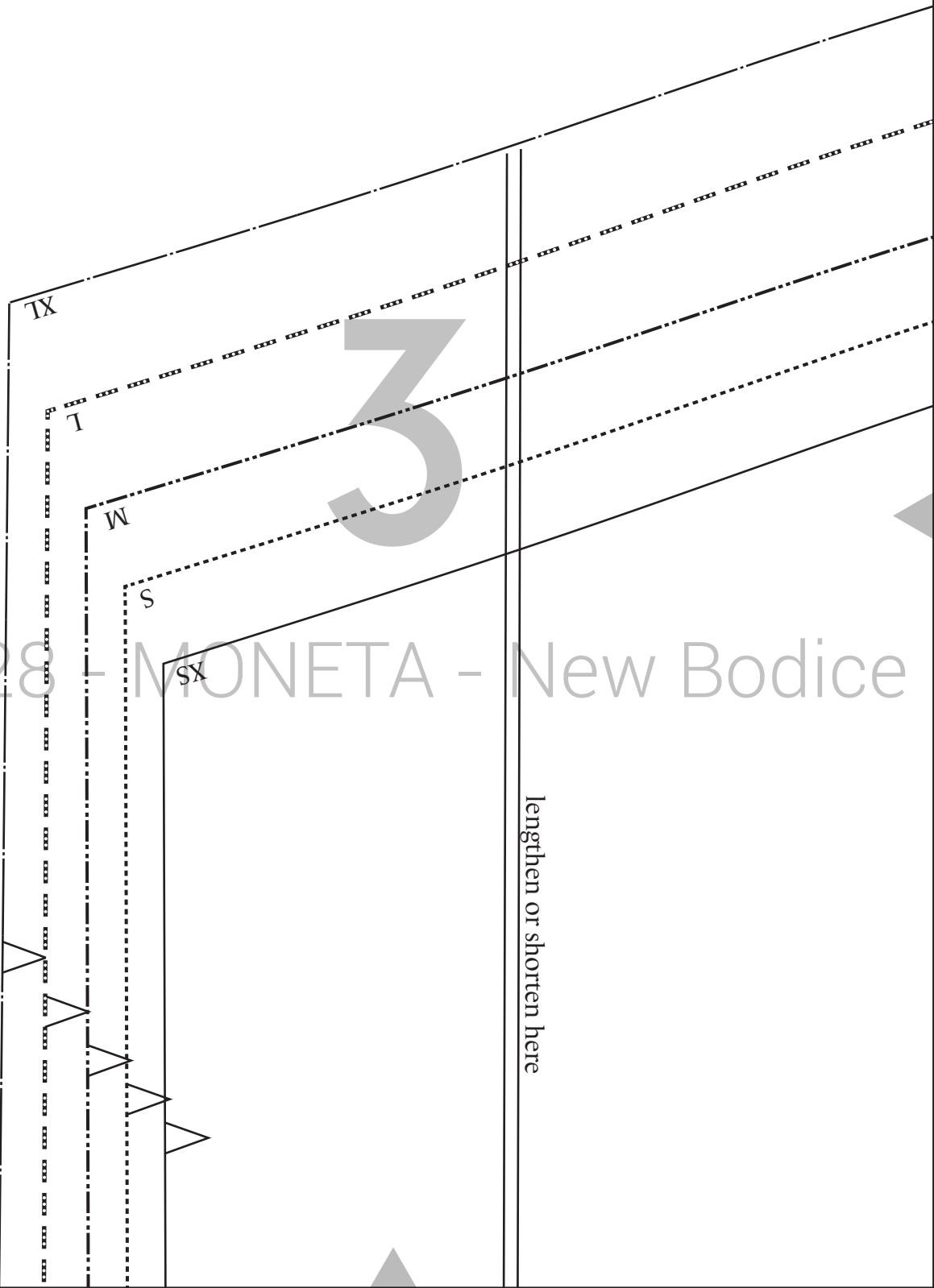


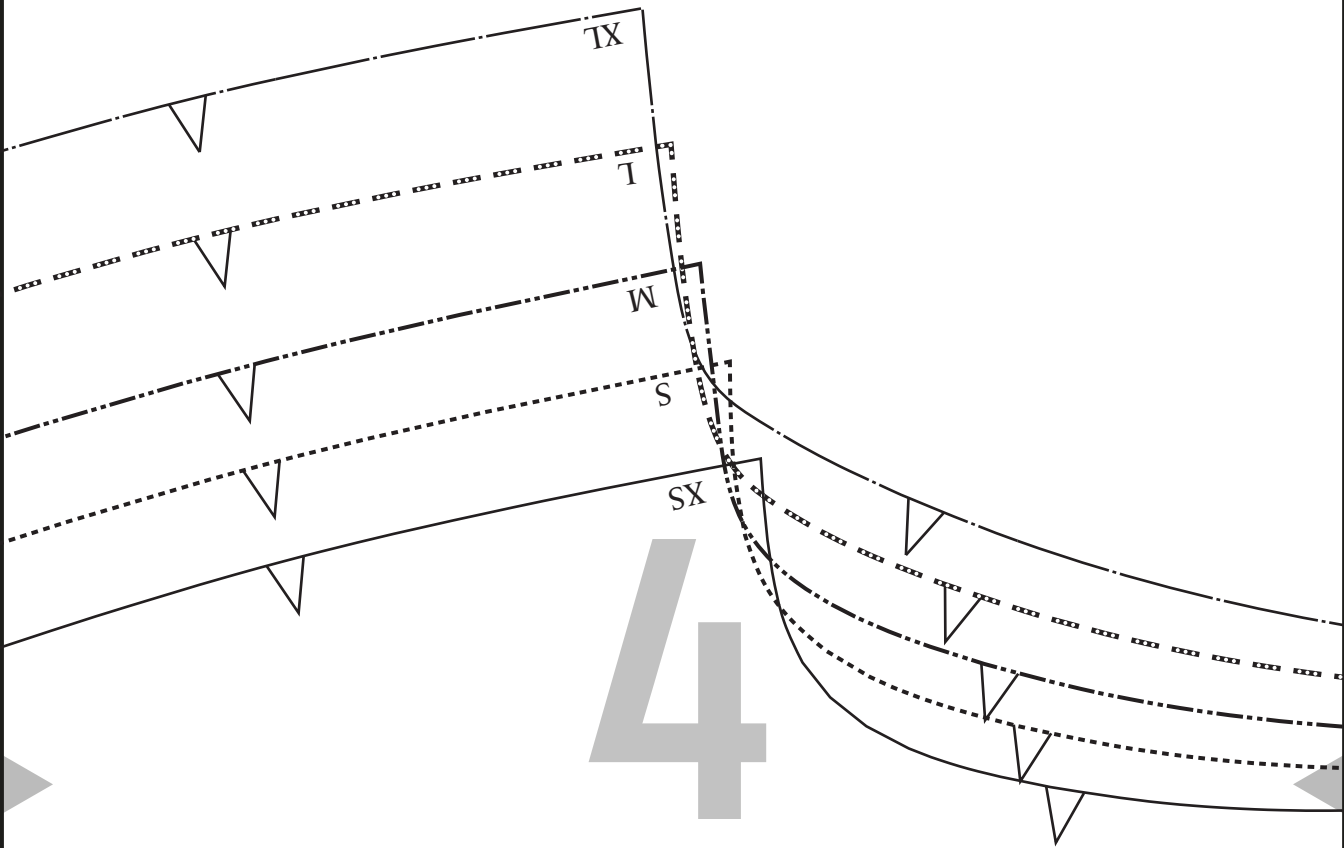
2

1028 - MONETA - New Bodice

3

1028 - MONETA - New Bodice





1028 - MONETA - New Bodice

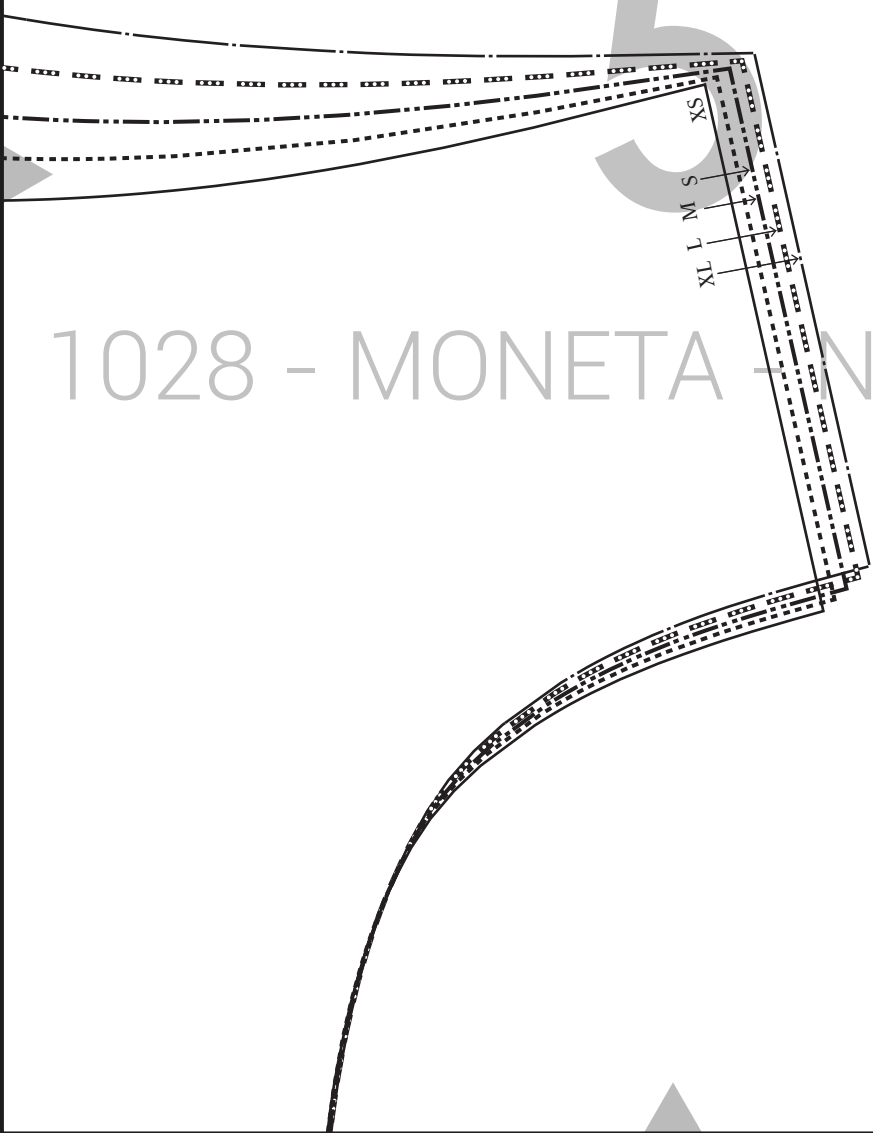
Colette
PATTERNS

1028 - Moneta
All Versions

A

Bodice Front
Sizes XS - XL

Main Fabric: Cut 1 on fold
Lining Fabric (Version 1): Cut 1 on fold



1028 - MONETA - New Bodice

place on fold of fabric



1028 - Moneta
All Versions



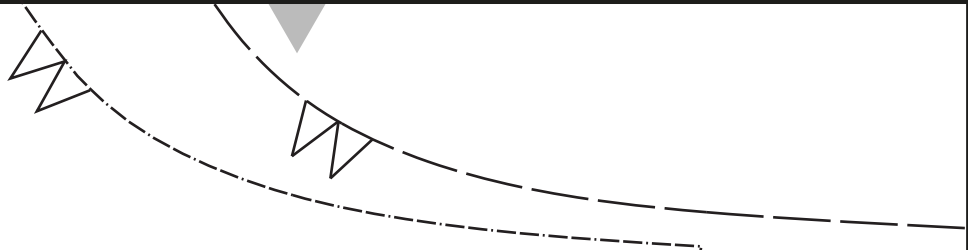
Bodice Back
Sizes 2X - 3X

Main Fabric: Cut I on fold
Lining Fabric (Version 1): Cut I on fold

1028 - MONETA - New Bodice



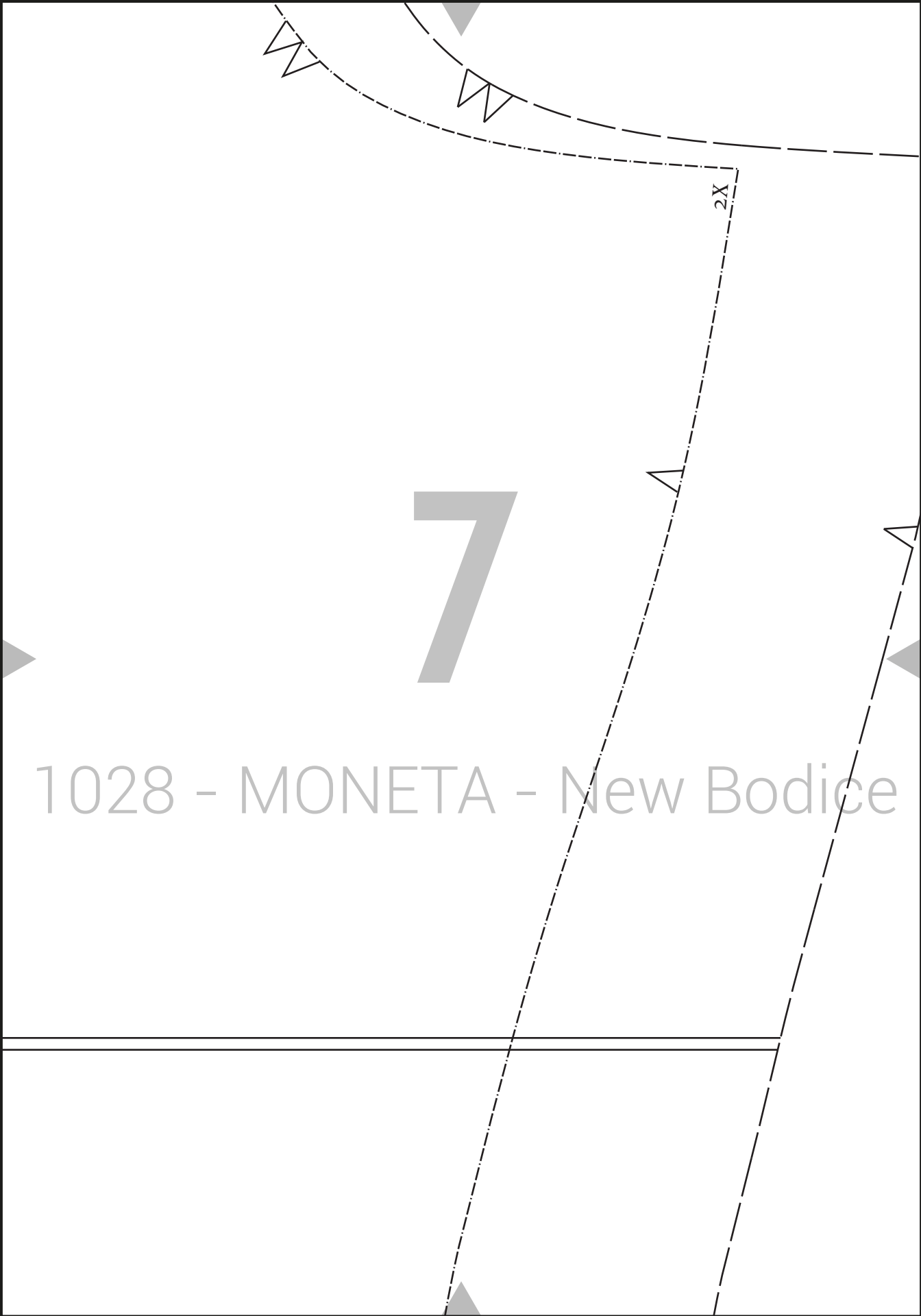
lengthen or shorten here

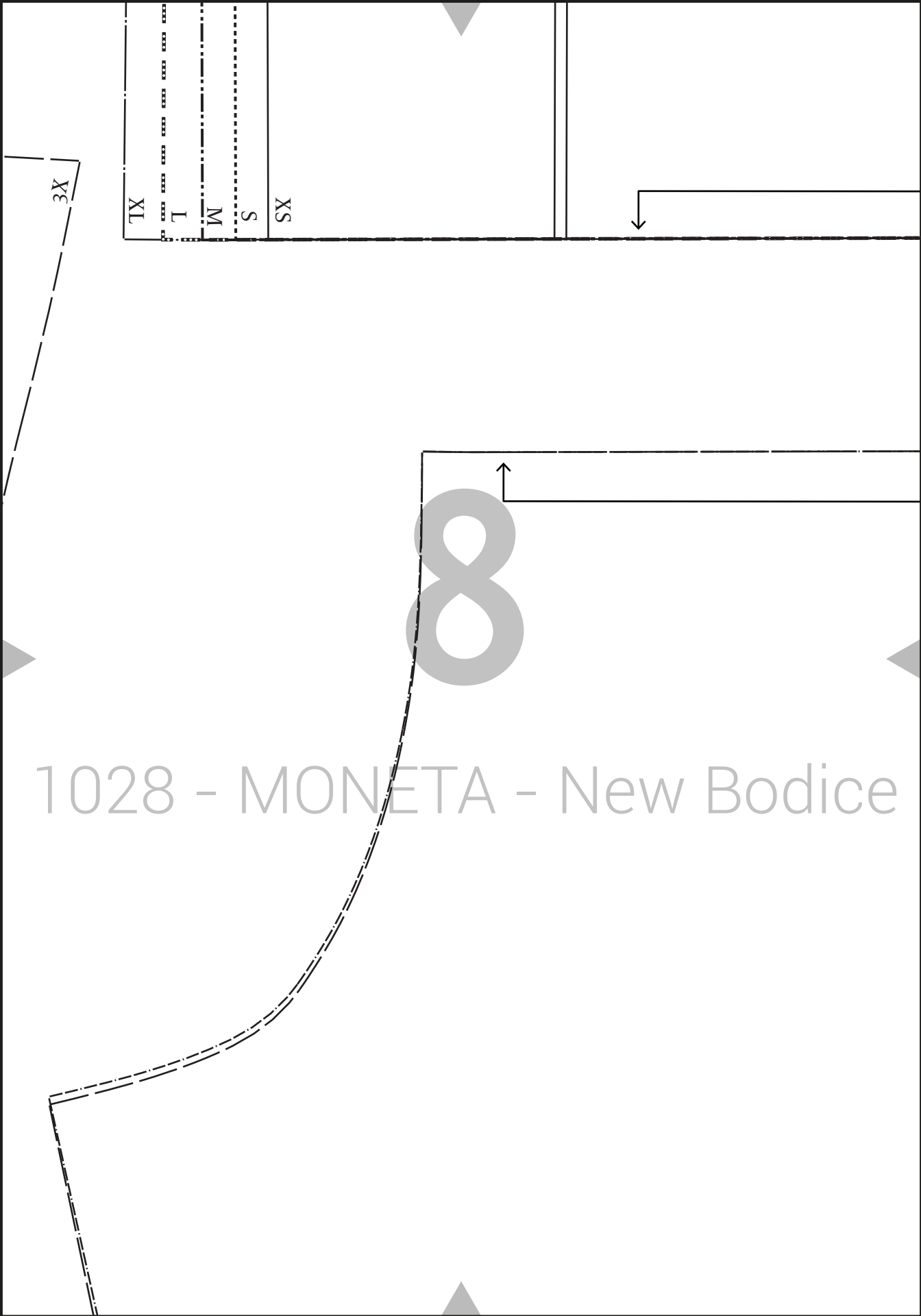


7

1028 - MONETA - New Bodice

2X





8

1028 - MONETA - New Bodice

TX

T

M

S

SX

3X



place on fold of fabric

place on fold of fabric

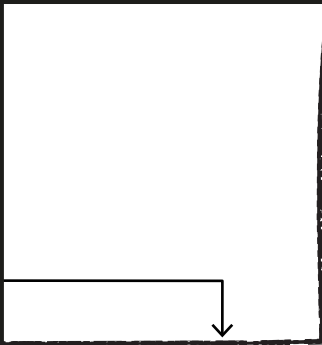
1028 - MONETA - New Bodice

Colette
PATTERNS

1028 - Moneta
All Versions

A

Bodice Front
Sizes 2X- 3X
Main Fabric: Cut 1 on fold
Lining Fabric (Version 1): Cut 1 on fold



10

2X

3X

1028 - MONETA - New Bodice

lengthen or shorten here



2X

3X



SX

S

W

I

TX

11

1028 - MONETA New Bodice

Colette
PATTERNS

1028 - Moneta
All Versions

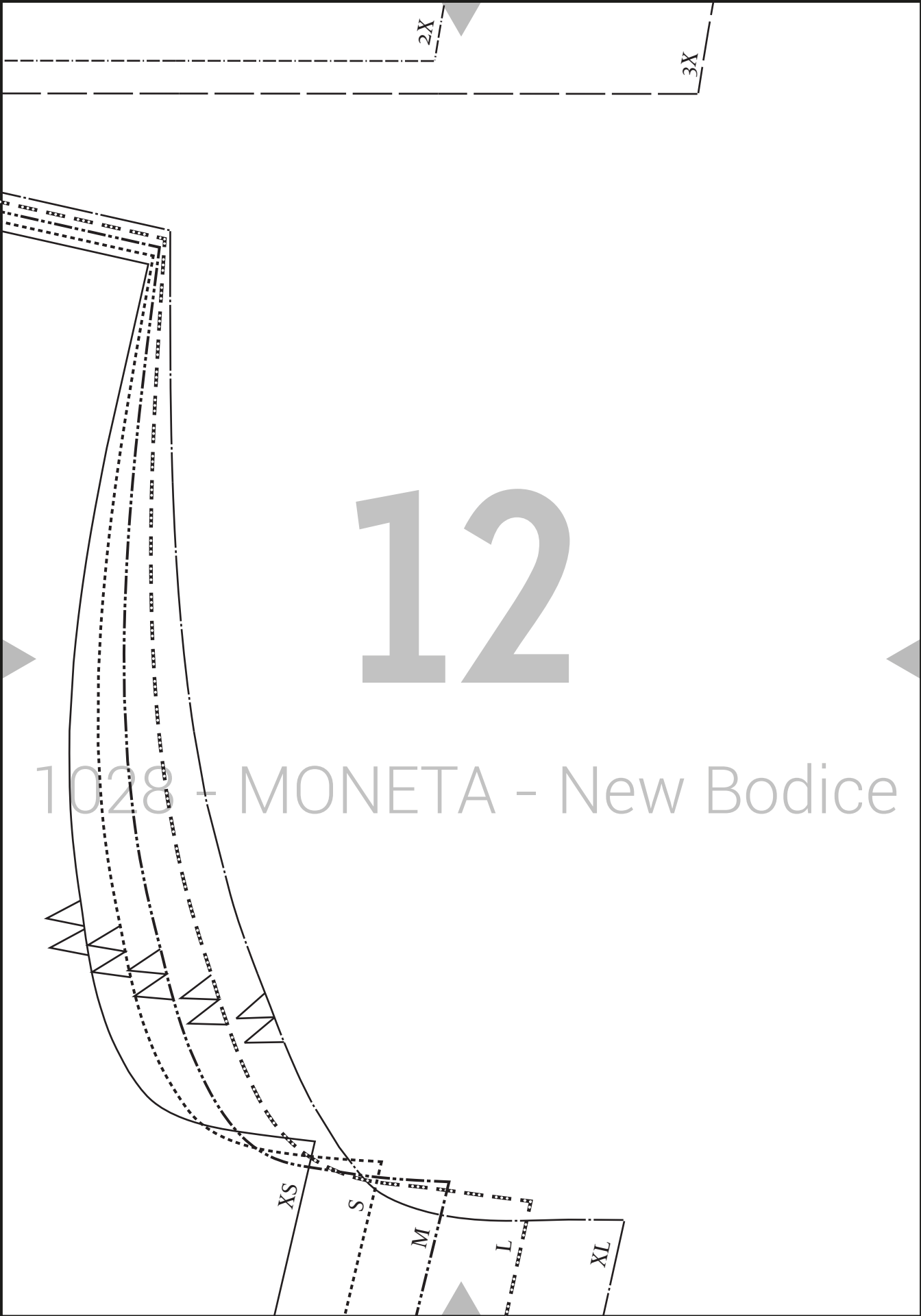
B

Bodice Back

Sizes XS - XL

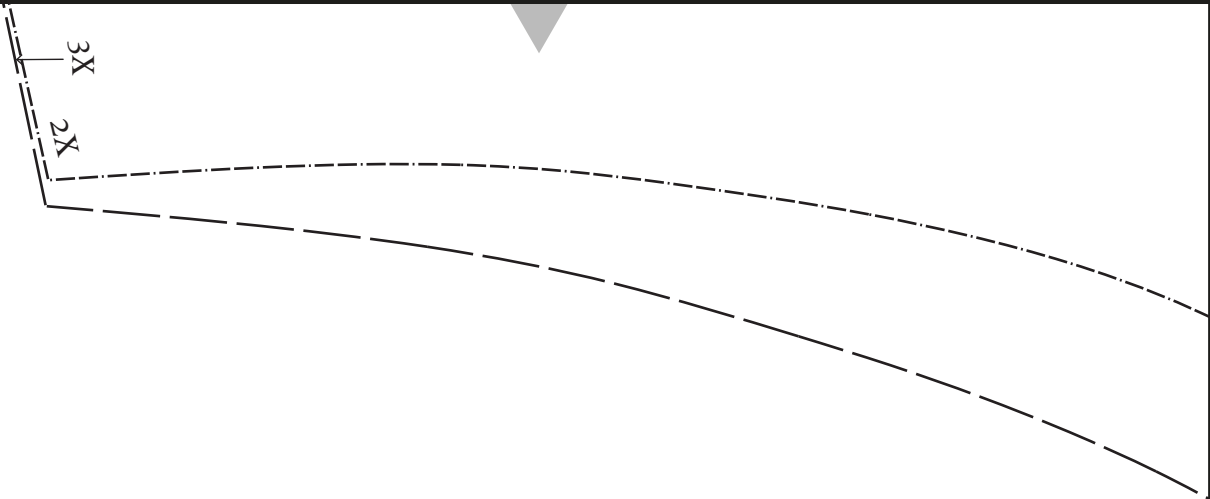
Main Fabric: Cut I on fold

Lining Fabric (Version I): Cut I on fold



12

1028 - MONETA - New Bodice



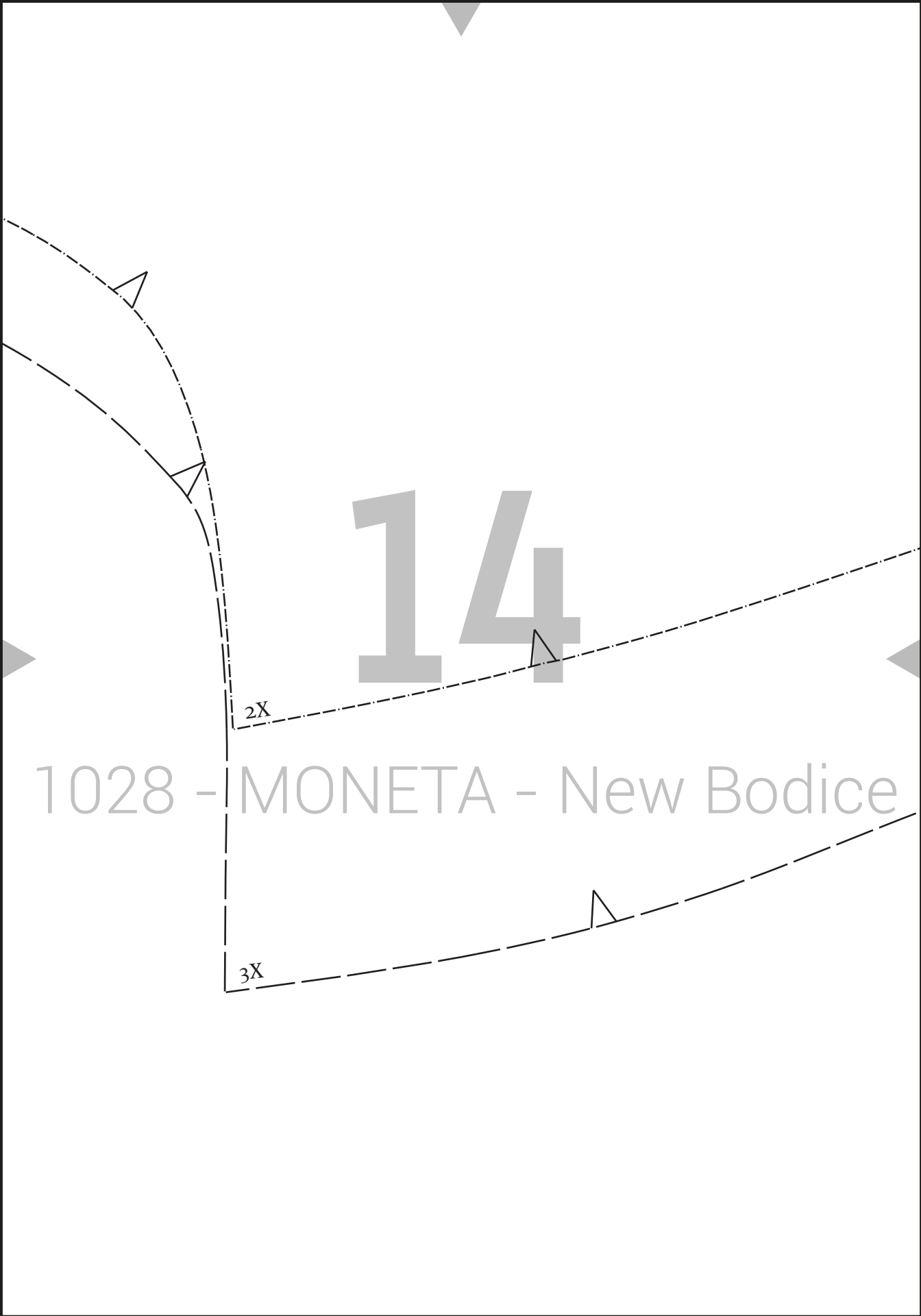
13

Key

- XS _____
- S (dotted line)
- M _____
- L (dotted line)
- XL _____
- 2X (dashed line)
- 3X _____

1028 - MONETA - New Bodice



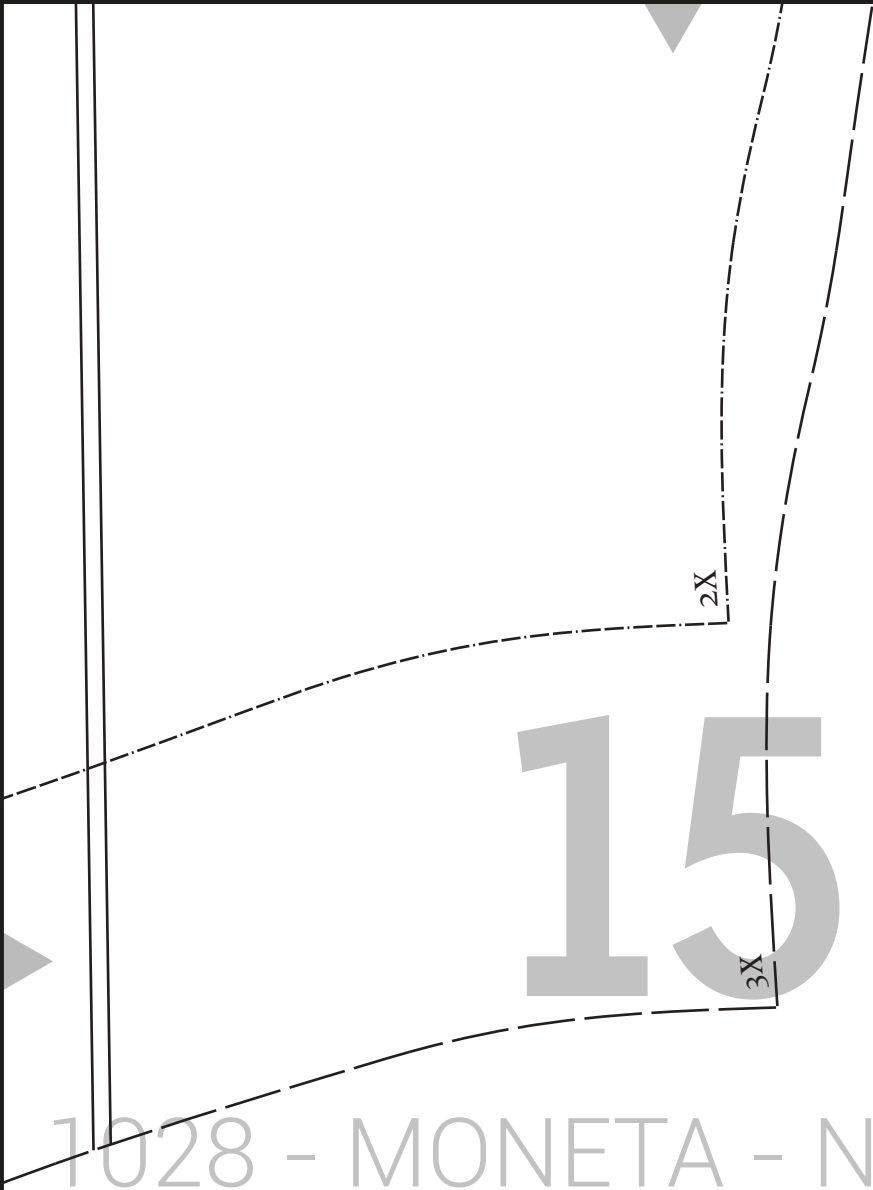


14

1028 - MONETA - New Bodice

2X

3X



15

1028 - MONETA - New Bodice

place on fold of fabric



16

lengthen or shorten here

1028 - MONETA - New Bodice

XS

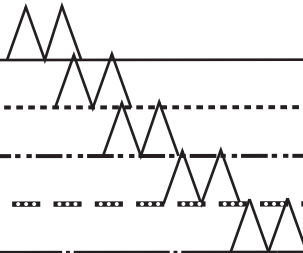
S

M

L

XL

XS





17

1028 - MONETA - New Bodice